

FIREPLACE INSERTS FROM BRUNNER



Eck-Kamin 57/52/52

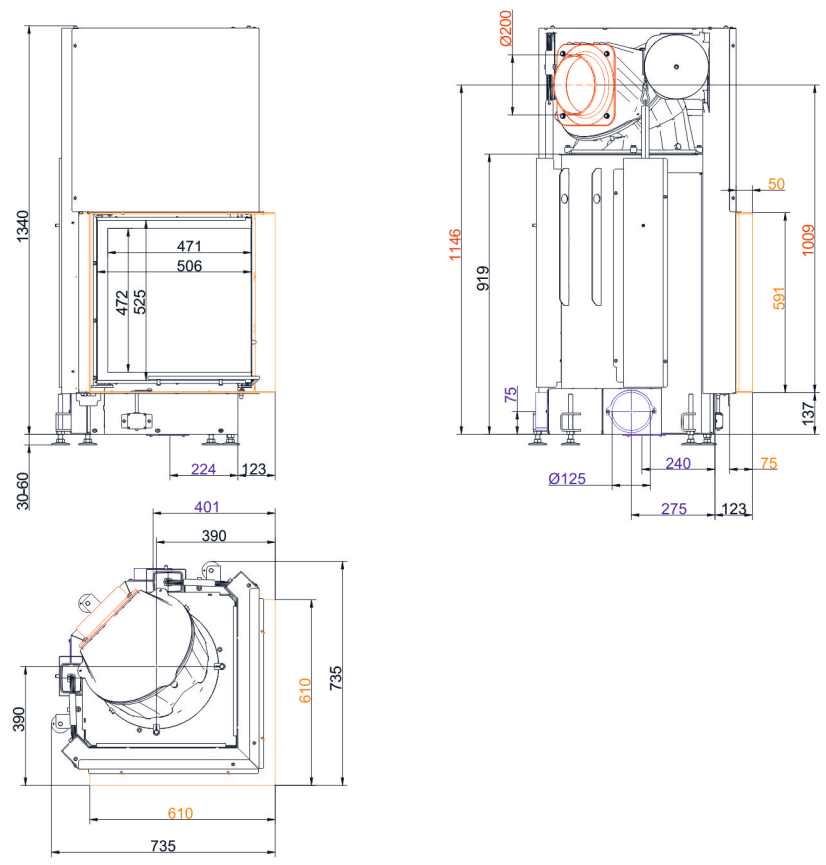
lifting door

State: 2023-08-21

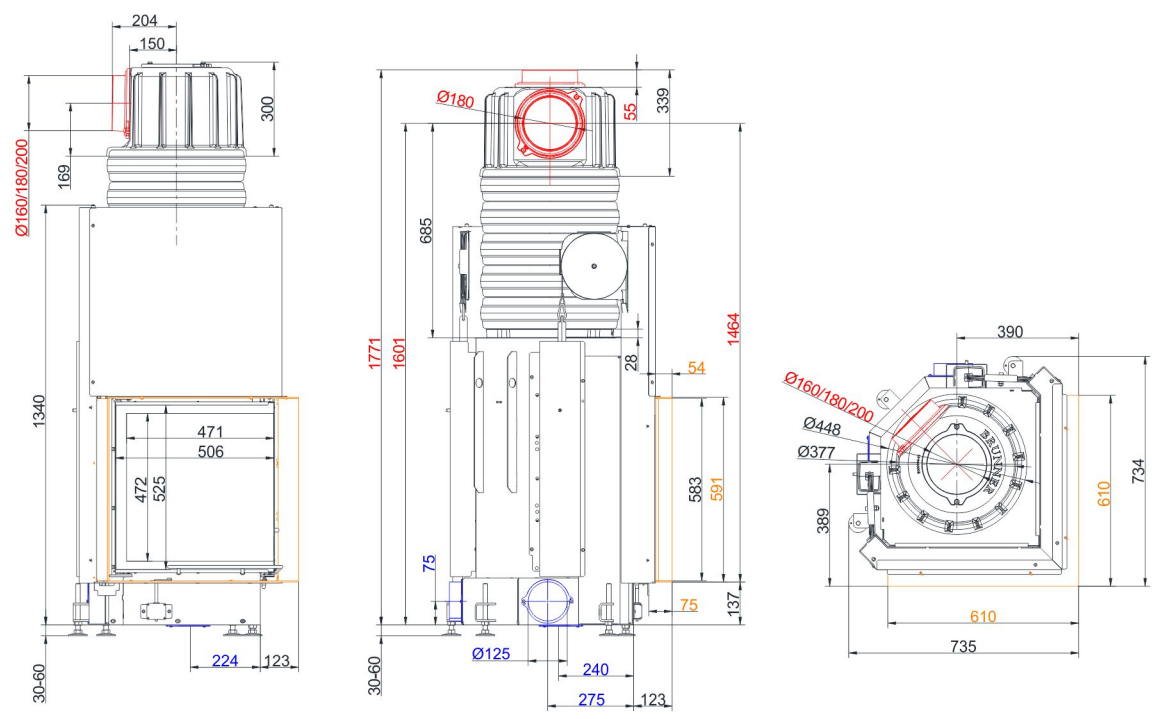


BRUNNER®
made in germany.

Dimension sheets - Eck-Kamin 57/52/52 lifting door

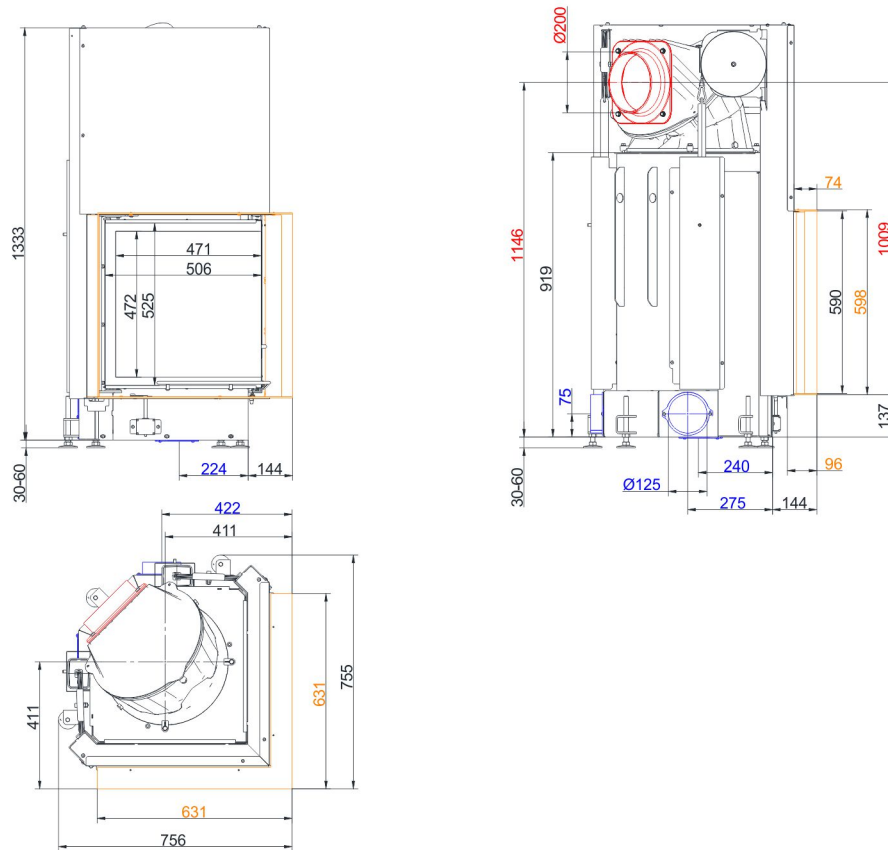


... with mounting frame 50 mm and cast iron hot air hood

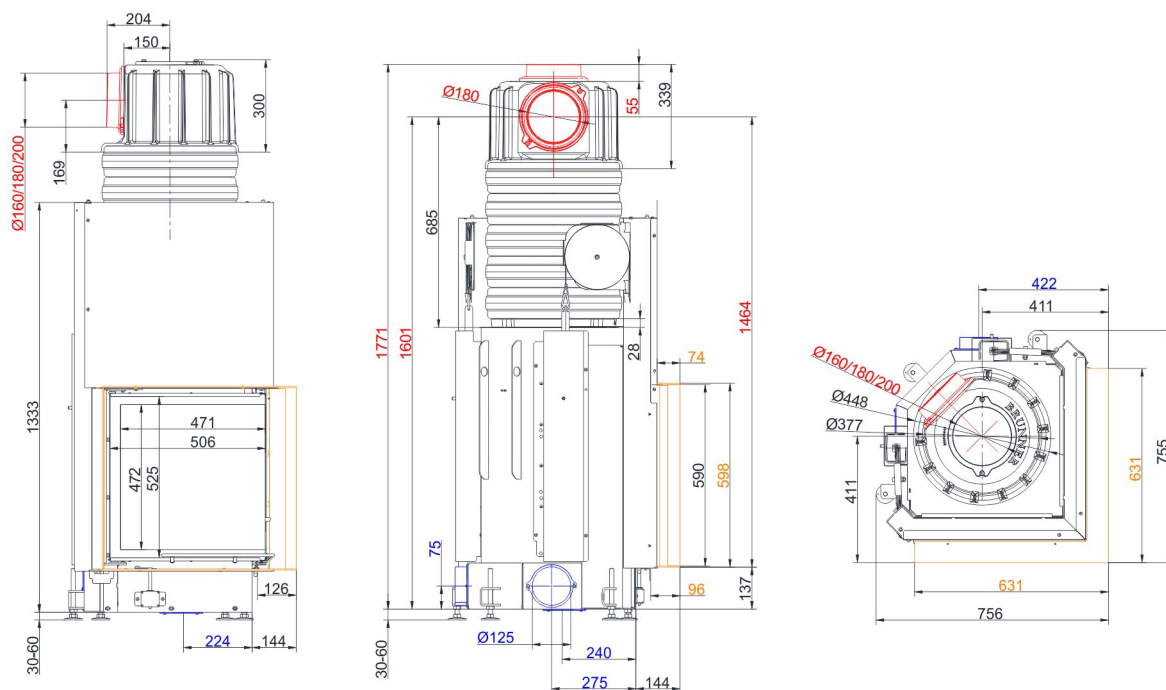


... with mounting frame 50 mm and MAS

Dimension sheets - Eck-Kamin 57/52/52 lifting door



... with mounting frame 70 mm and cast iron hot air hood



... with mounting frame 70 mm and MAS

We suggest for CAD planning Palette CAD. Permanent updated drawings: www.brunner.de

Frames/ flue gas outlet connection/ combustion air supply connection/ front variants/ support bearing are marked in color.

Planning and installation - Eck-Kamin 57/52/52 lifting door

Tested according to		EN 13229 W	EN 13229 WA
Values measured at		Rated power ¹⁾	Storage operation ²⁾
Suitable for all construction types according to rules		OK	OK
Data for functional demonstration			
Rated heat power	kW	10	-
Fire wood volume	kg/h	3	5
Combustion performance	kW	13	22
Flue gas mass flow	g/s	12	21
Outlet temperature (before reheating surface)	°C	-	340
Flue gas temperature after:			
metalic hot air hood	°C	210	246
1 x adjoining cast iron radiator (GNF 8/10)	°C	-	124
5 x accumulation rings incl. MAS casted cover ³⁾	°C	-	210
2 m ceramic accumulator ⁴⁾	°C	-	180
1,4 m accumulation stones (MSS) ⁴⁾	°C	-	180
Necessary supply pressure	Pa	13	15
Combustion air consumption	m³/h	30	50
Combustion air connection Ø	mm	125	125
Heizgastemperatur (vor der Haubenvariante)			
cast iron dome	°C	-	340
Heat distribution			
Insert / reheating surface	%	25 / 30	25 / 30
Glass pane (single / double)	%	45 / -	45 / -
Cross-section of gratings ⁵⁾			
Convection air	cm²	500 / 100 / 300	500 / 100 / 300
Supply air	cm²	500 / 100 / 300	500 / 100 / 300
Minimal oven surface for closed construction type			
Heat dissipating surface	m²	4	4
Minimal distances of the fireplace			
to cladding, insulation layer	cm	6	6
to mounting floor	cm	15	15
Thermal insulation without / with air gratings ⁶⁾			
Mounting wall	cm	14 / 10	14 / 10
Floor	cm	2 / 2	2 / 2
Ceiling	cm	16 / 12	16 / 12
Brick lining for combustible wall	cm	10	10
Weight			
Fireplace / combustion chamber	kg	213 / 52	
Meets requirement/limit values for:			
Germany/ Austria / Switzerland / Norway		1.BImSchV (Stufe 2) / 15a BVG (2015) / LRV / NS 3059	

- 1) Indications to "Rated power" determined with metallic reheating surface
- 2) Indications to "Storage operation" for the manual execution of the reheating surface (guide values).
- 3) Damper flap recommended
- 4) Standard value or calculated functional proof required.
- 5) for fireplace inserts / flue gas pipe / metallic reheating surface
- 6) Values determined with upper air cross-sections; stove cladding is heat emitting.